



**Assembly**

## Assembly system

The practical assistant for quick and easy tool changes!

Assembly system

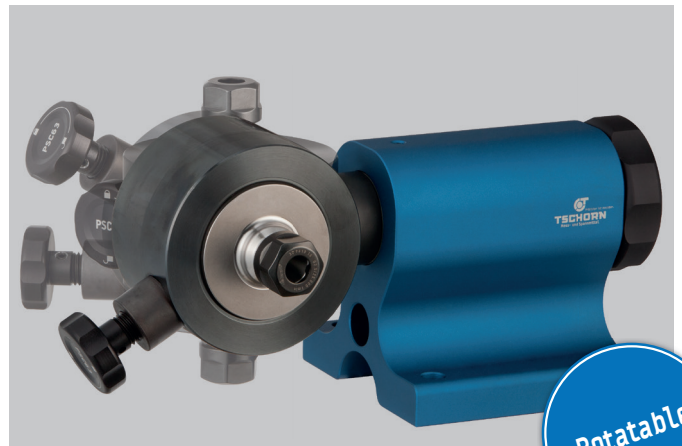
Long-lasting



Flexible



Quick



Rotatable

**The assembly system is flexible:** all popular adapter types and sizes are available and offer a quick and precise handling of your tools. The change of the adapters is easy and simple – you can mount your tools holders within seconds.

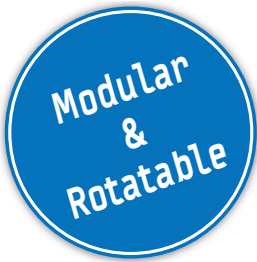
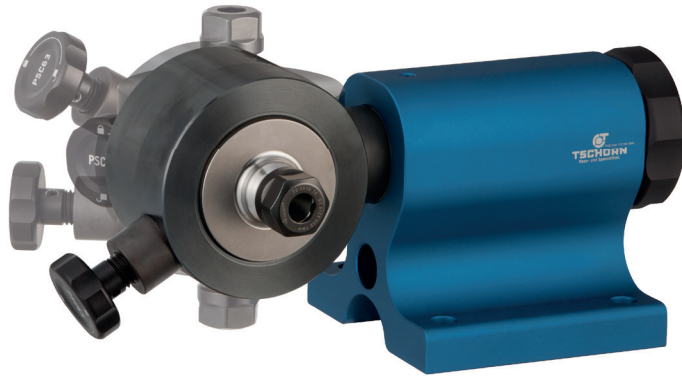
The assembly system is not only time-saving but also helps you to have long-lasting tool holders: thanks to our unique technology, the tool holder is not clamped at its precise conus - the conus is free. This is safer for your tool holders and no damages ensure a precise processing of the parts you have to manufacture.

As the adapter is **rotatable**, you can turn your tool at any time within seconds to the desired position. This enables **ergonomic** and healthy working conditions.

Also **job safety** is important. All adapters have been developed to guarantee form-closed and safe fixation of the tool holders. It is not possible to slip off, even not with a lot of power. This prevents accidents and injuries.







**DIN69880  
VDI**



**DIN69871  
SK**



**DIN69893  
HSK-A**



**DIN69893  
HSK-E-F**



**ISO26623  
PSC**



### Type

- aluminum body
- 4 x 90° revolving
- modular tool holders made of steel
- quick and easy exchange system
- high flexibility
- interlocking fixation of the tools
- conus cannot be damaged
- minimum space required
- optimal ergonomics
- quick and safe tool exchange within seconds





## Assembly system basic unit

Article No.	Description
004000000	Assembly system basic unit



Assembly system

Article No.	Description	Norm	Size
004100130	Adaptor	DIN69871, JIS B	SK30
004100140	Adaptor	DIN69871, JIS B	SK40
004100150	Adaptor	DIN69871, JIS B	SK50
004100132	Adaptor	JIS B Plananlage	BT30+
004100142	Adaptor	JIS B Plananlage	BT40+
004100540	Adaptor	DIN69893	HSK40-A
004100550	Adaptor	DIN69893	HSK50-A
004100563	Adaptor	DIN69893	HSK63-A
004100580	Adaptor	DIN69893	HSK80-A
004100510	Adaptor	DIN69893	HSK100-A
004102540	Adaptor - NEW -	DIN69893	HSK40-E-F
004102550	Adaptor - NEW -	DIN69893	HSK50-E-F
004102563	Adaptor - NEW -	DIN69893	HSK63-E-F
004102580	Adaptor - NEW -	DIN69893	HSK80-E-F
004100620	Adapter	DIN69880	VDI20
004100625	Adapter	DIN69880	VDI25
004100630	Adapter	DIN69880	VDI30
004100640	Adapter	DIN69880	VDI40
004100650	Adapter	DIN69880	VDI50
004100C32	Adapter	ISO26623	PSC32
004100C40	Adapter	ISO26623	PSC40
004100C50	Adapter	ISO26623	PSC50
004100C63	Adapter	ISO26623	PSC63
004100C80	Adapter	ISO26623	PSC80



## Assembly device



Ergonomic

Rotatable

Safe

Long-lasting

Assembly device with tool holder made out of steel for **safe clamping** of your tool holders. Thanks to a unique technology, the tool holders are not clamped at their precise cones. So the cones are free. This is unique safe for your tool holders and ensures **precise processing** of the parts you have to manufacture.



Turn your tool at any time within seconds into the desired position. Ergonomic and healthy working conditions thanks to the **practical rotating function**.



The assembly device is **stepless rotatable** at 45° to the left and 45° to the right.



Assembly device

The assembly device is available at the sizes SK30, SK40, HSK63 as well as VDI25, VDI30 and VDI40. Other sizes are available on request.



Article No.	Description	Norm	Size
004300130	Assembly device	DIN69871, JIS B	SK30
004300140	Assembly device	DIN69871, JIS B, DIN2080	SK40
004300563	Assembly device	DIN69893	HSK63
004300625	Assembly device	DIN69880	VDI25
004300630	Assembly device	DIN69880	VDI30
004300640	Assembly device	DIN69880	VDI40

Other sizes are available on request.